

COMTELCO

Technical Specification

Y422416

2400/2500 MHz

YAGI ANTENNA

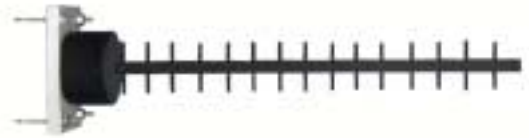
High Performance: This 16 element yagi provides 14dBi / 12dBd gain.

Rugged and weatherproof: Our hybrid radome construction provides excellent weather protection for our driven element. The radome is constructed of UV inhibited ABS. The heavy duty mounting plate is extruded aluminum. Stainless steel V bolts are provided for long term reliability and resistance to corrosion.

Lightweight and Durable: This yagi antenna is easily installed by one person, yet is designed to withstand 125 MPH winds.

Termination Options:

Type A: 12" Teflon pigtail with N connector.



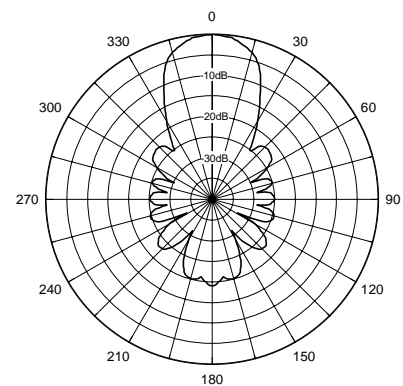
MECHANICAL SPECIFICATIONS

MATERIAL:	1/2" aluminum U channel boom 3/16" solid elements
RADOME:	3" UV inhibited ABS
LENGTH:	18"
WEIGHT:	2 lb.
MOUNTING:	2 1/2" mast maximum
FLAT PLATE AREA:	.11 ft ²
WIND RATING:	125 MPH
WIND LOAD:	6.6 lbs.

ELECTRICAL SPECIFICATIONS

GAIN:	14dBi / 12dBd
FREQUENCY:	2400-2500MHz
F to B RATIO:	20dB
BANDWIDTH:	>100MHz
VSWR:	1.5:1
POWER RATING:	150 watts
IMPEDANCE:	50 ohms

Horizontal Pattern



Vertical Pattern

